



27 Silverburn Drive, Ballasalla, Isle of Man, IM9 2EF  
Asking Price £415,000

- True three-bedroom detached bungalow with versatile living spaces
- Fully fitted kitchen with ample storage and work surfaces
- Spacious living room with feature fireplace and dining area
- Garage, workshop, and WC ideal for hobbies or projects
- Large conservatory ideal for family use and entertaining
- Private enclosed garden with lawn and mature boundaries



27 Silverburn Drive is a well-presented three-bedroom detached bungalow, offering generous accommodation, versatility, and a private, enclosed rear garden. The property benefits from a good-sized driveway to the front, providing ample off-road parking and an attractive outdoor space.

Internally, the accommodation is arranged around an L-shaped hallway which provides access to all principal rooms, creating a practical and flowing layout. To the front of the property is a spacious living room with a characterful fireplace and good natural light. An opening leads through to the dining area, making this an ideal space for everyday living and entertaining.

The dining area opens into the large conservatory via double doors. This additional reception space is used as a family room and offers excellent flexibility. It benefits from plumbing for utility appliances and a door providing access into the kitchen, making it practical and well connected to the main living areas. The conservatory also enjoys access to the rear garden, enhancing its appeal as an entertaining space.

The kitchen is fully fitted and offers a comprehensive range of units and work surfaces, providing efficient and functional space for everyday cooking and storage.

The bungalow offers three bedrooms in total. Two are generous double rooms, both benefitting from built-in wardrobes, while the third bedroom is suitable as a guest room, home office, or nursery. The family bathroom is of an excellent size and is fitted with both a bath and a separate shower cubicle.

Externally, the garage provides further valuable space and is complemented by a workshop area to the rear, which includes a WC. This space would be ideal for hobbies or DIY projects.

The rear garden is private and enclosed, featuring mature shrubs along the boundaries and a lawned area, creating an attractive and manageable outdoor environment. It offers a pleasant setting for relaxation, gardening, or entertaining and enjoys a good privacy.









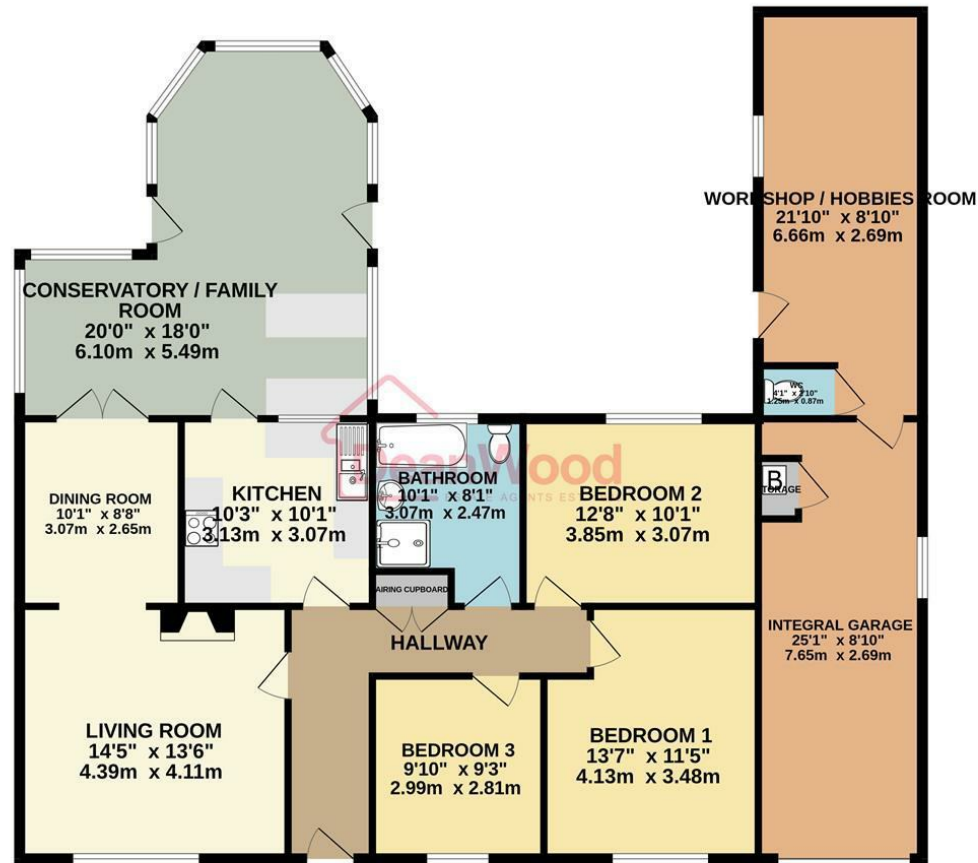




27 Silverburn Drive, Ballasalla, Isle of Man, IM9 2EF

---





GROUND FLOOR  
1621 sq.ft. (150.6 sq.m.) approx. TOTAL FLOOR AREA: 1621 sq.ft. (150.6 sq.m.) approx.  
Not to scale-for identification purposes only  
Made with Metropix ©2026



**DOUGLAS**

37 VICTORIA STREET  
DOUGLAS  
ISLE OF MAN IM1 2LF

T 01624 620606  
F 01624 677363  
E info@deanwood.co.im

**CASTLETOWN**

COMPTON HOUSE  
9 CASTLE STREET CASTLETOWN  
ISLE OF MAN IM9 1LF

T 01624 825995  
F 01624 825996  
E castletown@deanwood.co.im

**RAMSEY**

LEZAYRE HOUSE  
87 PARLIAMENT STREET  
RAMSEY ISLE OF MAN IM8 1AQ

T 01624 816111  
F 01624 816588  
E ramsey@deanwood.co.im

These particulars are for information purposes only. They do not constitute or form any contract nor should any statement contained herein be relied upon as a representation of fact. Neither the vendor nor DeanWood Agencies Limited ('the firm'), nor any officer or employee of the firm accept liability or responsibility for any statement contained herein. The vendor does not by these particulars, nor does the firm, nor does any officer or any employee of the firm have any authority to make or give any representation or warranty whatsoever as regards the property or otherwise. It is the sole responsibility of any person interested in the property described in these particulars to make all proper enquiries and searches to verify the description of the property and all other particulars herein.

FOR MORE PROPERTIES VISIT OUR WEBSITE @ [deanwood.im](http://deanwood.im)